

THE
Camellia
REVIEW

A Publication of the Southern California Camellia Society



Japonica 'Betty's Beauty'

Southern California Camellia Society, Inc.

An organization devoted to the advancement of the camellia for the benefit of mankind—
physically, mentally and inspirationally.

OFFICERS —2001-2002

BRADFORD KING, President	DAVID TRUJILLO, Vice President
SANDRA RAGUSA, Secretary	SCOTT DRUMHELLER, Treasurer
DOUG NOWLIN, Membership Chairman	BETH STONE, Foreign Membership

DIRECTORS

MELVIN BELCHER
7475 Brydon Rd., La Verne, CA 91750
(909) 593-4894

MARILEE GRAY
868 Kent Dr., Claremont, CA 91711
(909) 624-4107

SERGIO BRACCI
5567 N. Burton Ave., San Gabriel, CA 91776
(626) 286-4338

BRADFORD KING
1530 Marendale Lane, Arcadia, CA 91006
(626)445-8730

JOANN BREWER
4166 La Junta, Claremont, CA 91711
(909) 593-3442

AL LATHAM
655 Prospect Crescent, Pasadena, CA 91103
(626) 744-9445

JULIUS CHRISTINSON
3751 Hoover St., Riverside, CA 92504
(909) 688-1547

DOUG NOWLIN
1351 Bullard Lane, Tustin, CA 92780
(714) 838-1890

SCOTT DRUMHELLER
4900 Glencove Ave, La Crescenta, CA 91214
(818) 249-3127

SANDRA RAGUSA
10720 E. Freer St., Temple City, CA 91780
(626) 444-7350

JIM EMMONS
8159 Hollywood Blvd., L.A., CA 90069
(213)656-3291

BETH STONE
1997 Queensberry Rd., Pasadena, CA 91104
(626) 798-4993

JAC FAGUNDO
4291 San Viscaya Circle, Corona, CA 92882
(909) 735-9575

TIM THIBAULT
1418 Descanso Drive, LaCanada, CA 91011
(818) 790-7413

DAVID TRUJILLO
13265 Catalpa, Etiwanda, CA 91739 (909) 899-1650

HONORARY LIFE MEMBERS

MEL & BOBBIE BELCHER
COLONEL TOM DURRANT
JOSEPH E. NUCCIO
GRADY PERIGAN

SERGIO BRACCI
MARILEE GRAY
JULIUS NUCCIO
BERNICE GUNN THOMPSON

FOREIGN REPRESENTATIVES

DENISE DiSALVIA
61 Twynam Street
Narrandera NSW 2700
AUSTRALIA
badenis@webfront.net.au

BERNIE STEVENSON
95 Gleneagles Drive
R. D. 2 Katikati
NEW ZEALAND
bstevenson@xtra.co.nz

THE CAMELLIA REVIEW

Mel Belcher, Editor
Published by the Southern California Camellia Society, Inc. Copyright 2002

Four issues per volume
Send correspondence and manuscripts for publication directly to the Editor. Republication
is permitted if due credit is given to *The Camellia Review* and the author.
CHANGE OF ADDRESS— Notify the Secretary at once (**PLEASE!**).

TABLE OF CONTENTS

Vol. 63

January - February, 2002

No. 3

From the Archives: Mulches, Types and Values,

Allison, Anderson & Asper	3
C. Sinensis—Tea, E. C. Snooks	7
'Tama-No-Ura' and Its Progeny, Bradford King	9
Questions and Answers about Camellia Petal Blight	
Tom Gilfoy and Christine Taylor	10
Excerpts from a letter from Jennifer Trehane, England	12
Show Results	
Pacific Camellia Society	12
Orange County Camellia Society	15
Southern California Camellia Society, Descanso	17
San Diego Camellia Society	19
Southern California Camellia Society, Huntington	21
Pomona Valley Camellia Society	23
Southern California Camellia Council	26

COVER PHOTO

Japonica 'Betty's Beauty' Sport of 'Betty Sheffield Supreme'. White with each petal edged light. orchid. U.S. 1975—F. Moore, West Covina, CA.
Photo by Mel Belcher

AN INVITATION TO JOIN THE SOUTHERN CALIFORNIA CAMELLIA SOCIETY

The Southern California Camellia Society will welcome you as a member.

Annual membership — \$25.00 **For your convenience, we are now able to accept Visa, Mastercard and American Express.**

Includes subscription to *The Camellia Review* (four issues per year). Each three years a revised edition of *Camellia Nomenclature* with over 150 pages describing more than 4,000 varieties is published. The 2003 edition is available at a cost of \$10.00 to members and \$15.00 for non-members.

Please send name, address and check payable to:
SOUTHERN CALIFORNIA CAMELLIA SOCIETY

c/o Scott Drumheller, 4900 Glencove Avenue, La Crescenta, CA 91214

New Member	\$25.00	Sponsoring Member	\$50.00
Regular Member	\$25.00	Sustaining Member	\$100.00
	Patron Member		\$150.00

THOUGHTS FROM THE EDITOR



Stuff! Stuff! Stuff! Everywhere you look there is stuff. Many of you know that we recently sold our home of 23 years and, with a large lot, a four car garage and a three-car sized shop and two sheds for equipment and lumber plus a full basement, we have accumulated an inordinate amount of “stuff.” Everyone who came to look at the “for sale” house commented “What are you going to do with all your stuff?” And that chorus has been ringing in my head ever since. A big problem is to differentiate between “stuff” and “junk.” It is amazing the amount of junk that Bobbie has accumulated in our 54 years of marriage and 22+ years in this big house. Of course, I’m jesting since she has a similar view of my treasures. Fortunately, we have 60 days after close of escrow to take care of the challenge. This experience has directed my attention to other areas of life.

Probably too many of us harbor “stuff” in our everyday activities that needs to be screened out. We, certainly I, need to prioritize many areas of my normally exceedingly happy and satisfying life. Consistent with this philosophy, I retired for the fourth time from my professorial duties at Cal Poly.

The idea of prioritizing and screening is very appropriate in this wonderful world of camellias. One big question I have is “Why, if one is interested in competition and show results, do I have so many ‘dogs’ in my garden?” But—someone needs to keep some of these less competitive blooms before the public for comparison purposes. This brings me to my main “thoughts.”

Speaking of “stuff,” I really need more stuff for each issue of the Review. If the Review meets a need for our readers, we must have interesting and helpful material. I would certainly appreciate your contributions.

Please overlook the personal character of these thoughts even though they are real.

—Mel Belcher

Thank you for your contributions to our publication fund—

In Memory of Bob Jaacks
Tom & Elsie Hughes

In Honor of Grady Perigan
Jervis & Ruth Wolfe

Patron Member
Al Latham



Welcome New Members
Donald & Roxanne Kleine
734 Singing Trails Drive
El Cajon, CA 90219 (619) 579-9958

FROM THE ARCHIVES: MULCHES, TYPES AND VALUES

F. E. Allison, M. S. Anderson and J. Howard Asper

A CASE HISTORY

The main camellia planting in the Huntington Botanical gardens in San Marino, California now comprises about five acres located on the rather steep sides of a canyon. Running parallel with the canyon are wide walkways offering easy access to the different levels. These are so planned as to give visitors an opportunity to study the many different varieties of camellias growing there. Above them stretches a canopy of oak and pine trees which filters the sunlight and provides an atmosphere of quiet retreat.

Before 1954 the ground in this area was almost entirely covered with a heavy growth of ivy, wild strawberry, and aspidistra. While these are valuable plants in proper placement, it was evident that they not only did not harmonize in appearance but that they were detrimental to the welfare of the camellias. They consumed quantities of moisture and fertilizer and shut off ventilation, thus creating an ideal growing ground for the development of camellia blight. Consequently it was determined that all ground cover should be removed and the leaves and pine needles should be raked up and hauled away. This was done and, of course, it left the ground entirely clean and bare. Since the soil is largely clay, it was quite hard on the surface and impervious to moisture.

To remedy this situation a mulch of white fir shavings as spread throughout the garden to a depth of 2 to 3 inches. This was done in December 1954, and immediately the area seemed to have undergone a heavy snowfall. However, winter rains soon darkened the shavings and, as they blended into the appearance of the ground, the entire garden took on a clean, well-kept look.

Other improvements were soon apparent. The first benefit was lack of erosion during the heavy winter rains, and this was particularly noticeable on some very steep banks around a waterfall at the head of the canyon. In all other locations, too, the shavings packed quickly under the weight of steady rainfalls and kept rivulets from forming which would drain away the water. The second benefit was a very definite reduction in the amount of flower blight. This was due in part to the previous thorough cleanup of all dead flowers and other decaying material, and to the further fact that the flower blight apothecia seldom grow tall enough to penetrate the shaving and then burst, to disseminate their infection. Third, the clean ground surface made it easy to see and pick up dead flowers which fell from the plants. Finally, shavings as they disintegrated gave a perfect covering for the absorption and conservation of moisture during summer irrigations. Ground temperatures were kept cool, which encouraged the development of masses of feeder roots. Later, organic fertilizer was applied around the plants on top of the mulch, and was slowly but thoroughly leached into the soil and made available to the camellia roots. Results were very satisfactory.

All oak leaves and pine needles which dropped from the trees after the shavings were applied were allowed to remain as they in turn provided supplementary mulch. However, the breakdown of the shavings was rapid during the second year. Therefore, a new cover of shavings was added during the fall and early winter of 1956.

An unexpected benefit to the plants resulting from the mulch has been the appearance of a large population of earthworms. These busy helpers work day and night

loosening the soil and thus providing aeration and penetration of moisture and fertilizer.

No doubt results in varying localities from the application of various other types of mulch would be much the same as those obtained from fir shavings as here recorded. However, the shavings have the advantage of being inexpensive and easy to apply; they absorb moisture readily, and as they break down they provide an excellent medium for the growth of feeder roots.

Since the soil around camellia plants should not be cultivated, mulching provides a safe and easy answer to proper care everywhere, and certainly the camellias in the Huntington Gardens now appear to be in excellent health, with an abundance of growth and blooms.

Inquiry among various other camellia growers both commercial and amateur, discloses that at present fir shavings and similar wood by-products are being used along the Pacific Coast in rapidly increasing quantities, and that the users invariably report beneficial results as above recorded.

TYPES AND VALUES

A mulch is commonly defined as any substance spread upon the soil surface to protect the soil and plant roots from heat or cold, to improve soil moisture conditions, and to keep small fruits and other plant parts clean. In the broadest sense, mulching materials include numerous kinds of plant products, various manufactured materials, and a few natural inorganic substances.

Among the more commonly used organic materials are straws, corncobs, corn stover, sawdust, wood chips, bark, leaves, peat, hay, bagasse, tobacco stems, pine litter, peanut shells, manure, paper and miscellaneous weeds and wastes. Inorganic mulching materials include cinders, stones, charcoal, vermiculite,

glass wool and metal foils. The present discussion will be limited to the more commonly used organic mulches unless specific reference is made to the other types of mulches. Since one of the chief benefits of mulches comes from the humus formed through decay, it is obvious that inorganic mulches are usually only partial substitutes for plant materials, and often more expensive.

The mulching system of culture is essentially a partial or complete return to the virgin system where cultivation was unknown and where plant residues constantly fell to the ground and accumulated. In mulching practices as now used some shallow cultivation may occur at intervals for weed control or other reason, but ordinarily true mulching involves culture without soil stirring. In more extensive mulching systems, such as stubble mulch farming, the use of a comparatively small quantity of crop residues may be combined with limited shallow cultivation. Such a farm system, which departs greatly from the strict mulching system, is not used in floriculture or nurseries, and will not be discussed here.

The value of mulches for growing trees and shrubs, including camellias, and for ornamental annual and perennial flowering plants, as well as for many vegetable crops, has been demonstrated repeatedly. If properly used, mulching materials seldom fail to benefit plant growth. It is only the scarcity of mulching materials and the cost of transporting them to the place needed that keep them from being used more extensively.

EFFECTS OF MULCHES

Mulches exert their beneficial effects on plant growth in a variety of ways, physical, chemical or biological. Harmful effects are seldom encountered and can usually be anticipated and avoided by using simple precautions, including adequate additions of nutrients that

are likely to be deficient. The effects of mulches and suggestions for use are discussed below.

INSURING MORE EFFICIENT USE OF RAINFALL

One of the main benefits of mulches is that they give more opportunity for water to enter soil, and hence decrease runoff. This is true of all mulches that are of the open type, whether organic or inorganic. On rare occasions some mulches may pack so tightly as to shed water. This sometimes occurs shortly after sawdusts are added to soil, and then the mass becomes thoroughly impregnated with fungal filaments. In this event, stirring of the surface to break the crust may be beneficial, but in any case the effect largely disappears after a few weeks of rapid decomposition. An open mulch holds the rainwater at or just above the soil surface long enough for most of it to infiltrate slowly into all but the most compact and slowly permeable soils.

When raindrops collide with bare soil they usually hit with such force as to destroy most of the surface soil structure very quickly. It has been determined that relatively small rains of high intensity may destroy 75 percent or more of the infiltration capacity of a clay soil. The raindrop impact also loosens much soil at the surface so that it is carried away by the runoff. Rills and gullies may form quickly. A good mulch completely stops such erosion and prevents both the direct effect of the raindrop on surface soil structure and sheet erosion. The soil under the mulch, where no raindrop impact can occur, retains its open porosity, and aeration usually remains as near perfect as it is possible to provide. In the absence of a mulch the surface layer of soil dries quickly to a hard, impervious crust.

The beneficial effects of mulches on infiltration capacity are likely to be increasingly evident after a period of years of adequate mulching. It takes

time to build up a good soil structure, but once formed it is unlikely to deteriorate so long as a good organic mulch is maintained.

Loss of water from soils by evaporation is markedly retarded by a good mulch—that is, by a mulch that does not permit water to be pulled from the soil by capillarity. Loose straw, ground corncobs, hay or wood shavings are usually effective, whereas rotted manure, composts, or some peats may be somewhat less effective in blocking evaporation. Manufactured materials, such as paper, cellophane and aluminum foils, are effective in reducing evaporation but interfere with the free entry of water into the soil.

Weeds constitute one of the most serious sources of water loss in unmulched soils. An effective mulch prevents weed growth and stops the wasteful transpiration losses from them. This beneficial effect of mulches, together with the saving in labor and loss to the weeds of available nutrients, may go far toward compensating for the cost of providing and maintaining the mulch.

Some of the benefits from mulches, mentioned above, can be realized by the use of a sod cover. Such a cover will prevent raindrop damage to soil structure, allow more water to enter the soil, and prevent erosion. But unlike a good mulch, sod will increase water losses by transpiration and also compete with the crop for available plant nutrients, especially nitrogen. It is only under special conditions, such as under tree crops, that a sod can be used as a mulch substitute without its becoming the dominant crop.

As a word of caution, it should be pointed out that under special conditions, such as on poorly drained soils, a mulch may not be desirable. Obviously, in such soils additional water would merely make a bad situation worse.

MAINTAINING A MORE EVEN SOIL TEMPERATURE.

Mulches usually retard the heating up of soils on hot days and also retard the cooling-off process on cool nights.

Extreme variations are thus prevented and this usually results in better root growth. The roots of most of our common plants grow best at temperatures below about 80° F. and the rate of growth may be near zero in unmulched soils on very hot days. Total plant growth is likely to be affected in a similar manner as the roots.

Protection against alternate freezing and thawing is also provided by mulches. In regions where this occurs the damage to plants is likely

to be much worse than where the soil stays frozen for many months. By maintaining a more even soil temperature a mulch decreases winter injury to plants.

The color of a mulch affects soil temperature. Dark-colored mulches absorb heat whereas light-colored materials reflect heat rays. The contrast is especially evident if direct comparisons are made between soil temperatures under black paper and under white paper. In actual practice most of the organic materials used for mulching are either dark colored initially or acquire such a color as weathering and decay proceeds closer and closer to the stage that we call humus.

To be continued in Vol. 63, Issue No. 4

CAMELLIA STATIONERY

Our beautiful camellia notecards (back cover) are still available in sets of eight for \$6.00 including tax and shipping. Folks who use them and re-order tell us how truly lovely they are. They make wonderful gifts for your fellow camellia lovers or those you are trying to get interested in this great hobby! You can even order them for your own use. They also look beautiful in frames.

Cards can be ordered through Dorothy Grier, 13229 Pipeline Avenue, Chino, CA 91710 (909) 628-1380. Make your check payable to SCCS.

If any camellia society would like to use these cards as fund raisers, orders for 25 or more sets are priced at \$5.00 each, including tax and shipping.

Join Australia and New Zealand Camellia Societies

Australia Society
\$11.00 Single
\$12.00 Family

New Zealand Society
\$12.00 Single
\$14.00 Family

(These are U.S. funds.)

Send your check payable to Southern California Camellia Society
c/o Beth Stone
1997 Queensberry Road
Pasadena, California 91104-3351.

C. SINENSIS—TEA

E. C. Snooks, La Jolla, California

Let's play a game of word association. The word is "camellia." You probably thought of 'japonica' as most people do. In fact, in the Deep South many people still refer to their camellia plants as japonicas. To be sure, the collector might also think of the large reticulatas or even the hybrids and sasanquas, but of all of the camellia species none is nearly as important as *C. sinensis*. In fact, it is one of the most important crops of the world next to the grains and cotton and has held this position for centuries. Even wars have been fought over the possession of this species. What makes *C. sinensis* so important? It is the source of tea.

Of all of the camellia species, it is the only one with appreciable quantities of caffeine. The tea plant is grown in vast areas of China, Japan, India, Sri Lanka (Ceylon) and neighboring areas and, in fact, has been tried in several areas of the United States. Tea has been the backbone of many shipping routes of the past, the primary source of wealth for several kingdoms and yet we know so little about it. This is most likely because it is not a showy plant and, being a plant of agriculture, it is not likely to be high on the "socially acceptable" plant list.

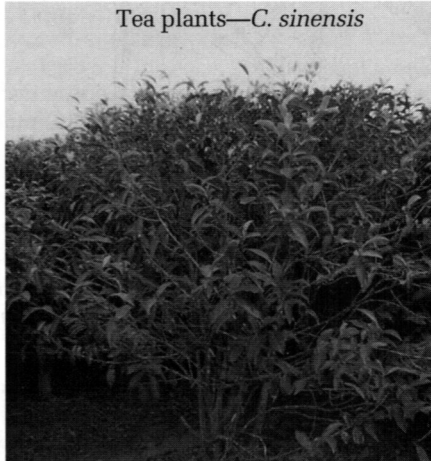
Two main forms of *C. sinensis* are now recognized—*C. sinensis*. *Var. sinensis* and *C. sinensis* *var. assamica*. From these two main types, many horticultural forms have developed, two of which are illustrated in the

accompanying drawing. These forms, together with the climatic and soil conditions where grown, account for the host of teas available on the market. These various forms have been grown for centuries and only recently a report from China tells of a tree found in the wild which is 100' high and has a trunk measuring 126" in diameter! Now that's some camellia. It is believed to be about 1,000 years old. Not all forms develop into trees, even with time. It is the bush forms that are usually favored for commercial uses.

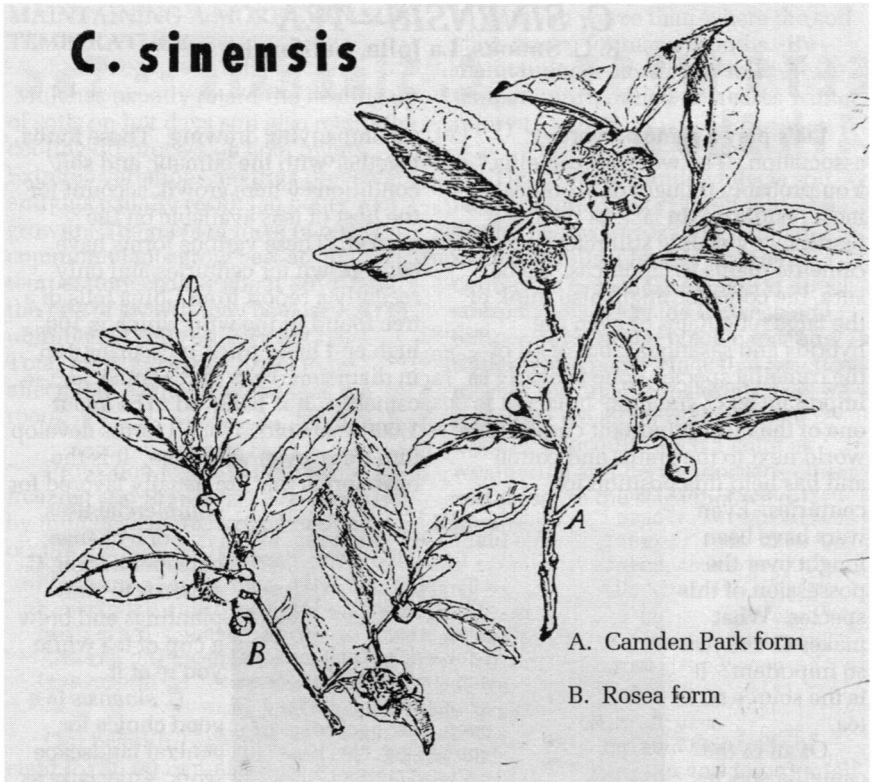
For a change, consider adding *C. sinensis* to your plantings and brew a cup of tea while you're at it.

C. sinensis is a good choice for general landscape work, especially as a filler or background plant. The leaves are thin, of a light medium green measuring about 3/4" x 1". The twigs are brown turning to

gray with age. The flowers, borne up and down the stems, are usually white, though a pink form is known, 5/8 to 7/8" in diameter, single and of a cup form. Seed is set readily and, being an early bloomer, it is finished blooming before one has to be concerned with petal blight. Propagation is best done by seed or, to retain a special type, by cuttings. Grafts tend to decline in a few years though a cultivar grafted onto a seedling would undoubtedly be long-lived. The growth habit is usually compact and they can readily be trimmed, even as a hedge or topiary subject.



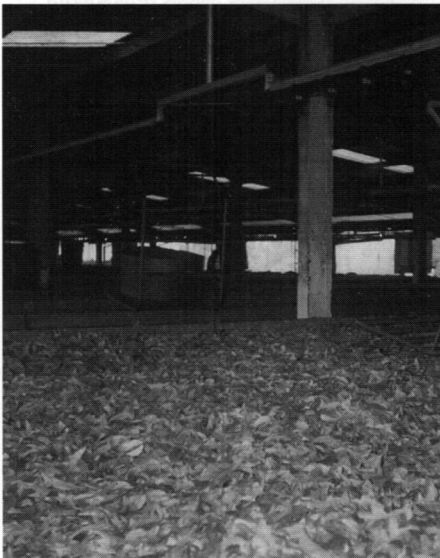
C. sinensis



A. Camden Park form

B. Rosea form

Editor's note: Gene mentioned China, Japan, India and Sri Lanka as tea-growing countries, but Bobbie and I enjoyed visiting a tea plantation just outside of Kluang, Malaysia, during the year we lived there.



Left - inside a tea processing plant

Above - a tea plantation

'TAMA-NO-URA' AND ITS PROGENY

Bradford King, Arcadia, California

In 1973 'Tama-no-ura', a red C. japonica seedling with a wide band of white was discovered in Japan. It came to the USA in 1978 where Nuccio's nursery began growing it. The bloom is a small to medium single with a tendency to hang its head (bloom face down). This is its only draw back as the flower is bright red with a natural (non-virus) white border. The plant grows quickly, has slender branches and an upright growth. It makes an excellent landscape or potted plant. While listed as a midseason bloomer, it is early to midseason for me in the Los Angeles County Arboretum area of Southern California. I grow it in partial shade as a landscape plant next to 'Shishi-Gashira', which gets more sun.

'Tama-no-ura' has been used to develop a number of picotied or white-bordered blossoms. The white border is part of the genetic heritage. Nuccios has developed nine seedlings to date that are all colorful red and white but have various forms and sizes.

The first was introduced in 1991 and aptly named 'Merry Christmas'. This medium brilliant red with a white border has a single to semi-double flower. It is a larger flower than its parent and keeps its "face up." It makes an excellent choice for a Christmas gift as it often is in full bloom.

Nuccio's Nurseries introduced seven Tama varieties in 1993. Six of them can be seen on the cover of *The Camellia Review*, Vol.55 Issue 2. They are 'Tama Americana', 'Tama Bambino', 'Tama Beauty', 'Tama Electra', 'Tama Glitters' and 'Tama Vino'. 'Tama Bell' was not included on the cover.

This cover inspired me to select my favorite Tama. I really like the brilliant red and white border of

'Tama Electra'. The two-gallon plant was potted up in 1998 to a five-gallon. I enjoyed the number of bud sets and plant growth but was disappointed in the bloom. It bloomed regularly as a small brilliant red, but little or no white border. A number of other Southern California Society members reported similar results. I doggedly decided to stay with it. In 1999 after previously blooming all red flowers I put my 'Tama Electra' in the ground. Well it paid off! In December 2001 and January 2002 all blooms were brilliant red with nice size white borders.

Why? Genetics? Culture? Two significant changes can be reported. First, as noted above, it was planted in the ground two seasons ago. Second, my fertilization program this year included more iron. It is well documented that iron improves color intensity especially in reds.

Is this growing season different than past seasons? Many of my japonicas bloomed early this year. This season 'Tama Electra' began blooming in late December and had finished blooming completely by the end of January.

This leads me to tentatively conclude that 'Tama Electra' needs time to "grow" into its "adult plumage"—those genetics that bring the red with a white border. Iron certainly helped the red be brilliant. Good culture including a fertilization program helped produce plant growth, bud set and quality blooms, but it seems unlikely that my personal culture program caused this year's results.

Will this 'Tama Electra' acclimatize to the landscape and bloom reliably year in and year out? Only time will tell!

In 1999 I received a two gallon 'Tama Peacock', the most recent of the Nuccio 'Tama' releases, as a birthday

gift. The bloom is a lovely maroonish red that washes into a white border. The flower is tubular, semi-double and small to medium in size. To date the young plant is a reliable upright bloomer with thin drooping branches. It is planted in shade next to 'Tama Electra'. They make very good companions. Mr. & Mrs. Julius Christinson with 'Tama Peacock' won the best small single japonica at the Pacific Camellia Society Camellia

Show, the first show of the 2002 season in Southern California. This was the first win for 'Tama Peacock' in Southern California. Will it continue its winning ways?

The delightful natural color breaks of all nine Tama varieties bring variety to a camellia collection. They look good as landscape plants and are proving their potential to win blue ribbons in the shows.

QUESTIONS AND ANSWERS ABOUT CAMELLIA PETAL BLIGHT

Tom Gilfoy and Christine Taylor

In the last issue of The Review you read an article by Christine Taylor, New Zealand, about some of the research she has been doing on camellia petal blight. Presently she is busy writing her doctoral dissertation and hopes to be finished during our summer 2002. We will look forward to her conclusions. Because Southern California and New Zealand are on opposite sides of the Equator and have similar climates, Christine was able to double her research capabilities by collecting materials and data at Descanso and Huntington as well as in her own country.

The following are excerpts from correspondence between Tom Gilfoy, La Canada, and Christine Taylor about camellia petal blight.

Tom: I have two questions that I thought your research may enable you to answer, although I realize the questions are only indirectly related to what you're doing. The first is, do you know if the life cycle of petal blight may be sustained by a single infected petal which is on the ground detached from the blossom or must it remain attached for the infection to run to the

center of the blossom and the *sclerotia* to form? The answer to this is of considerable practical importance to those of us who crawl around on our hands and knees picking up blossoms, many of which shatter and send petals flying everywhere.

Christine: Your questions: yes, a single petal can form a *sclerotium*, usually smaller than a watermelon pip, and the petal doesn't need to be attached to the flower. However, petals by themselves dry out very quickly (therefore killing the fungus) and in a hot, dry place like Los Angeles, I think most infected petals would not go on to form the *sclerotium*. In wet places like NZ, I do see *sclerotia* form in single petals, but it's still not a frequent sight and one or two cultivars seem to be more prone to this. I would recommend picking up single petals only if it's been raining for several days (like last year's spring rain). If it's been dry, or just light rain, or only irrigation quantity, then I wouldn't be worried - so long as the single petals have dried out for a few days, the fungus should be killed. Small *sclerotia* are also more likely to

dry out and die over summer, autumn and winter too, and produce fewer and smaller *apothecia*, so their threat is much less than a nice fat *sclerotium* formed in a lovely big fleshy *reticulata* flower.

Tom: The second question is, have you been able to determine how long spores remain infectious after they leave the *apothecia*? Is it for hours, days, weeks or ? This is also a question of practical importance in trying to work out the least harmful work schedule for gardeners whose leaf blowers give spores second flight.

Christine: In answer to your second question, I haven't done any research into spore survival. All I can repeat is information known about the spores of other closely related species. Probably they can survive 2-24 hours

in perfect conditions. They dry out very quickly, so if it's hot and dry, they would die pretty quickly, but if it's nice and humid, light rain etc then they might survive some hours. The *apothecia* tend to release spores when it's wet, so don't rake under bushes when the ground is wet. Once a spore has landed on something (like my clothes or a car) it would secrete lots of sticky stuff to help it adhere to the surface of whatever it's on. Once attached, it's permanent, it's not going to be transferred to someone else's garden or drop off, until dead. Leaf blowers are a thing we don't have in NZ so I will have to guess their effect: they would definitely trigger the *apothecia* to release spores if the jet of air hit them and I suppose the spores would be readily blown about in the currents of air set up.

•••••

The following are quotes from a little book *I Love You* compiled by H. Jackson Brown from letters his mother had written him and his sister over the years. Actually, these were the P.S. she added to almost every one of her letters. Enjoy—

I know you have an impressive wardrobe. But of all the things you wear, your expression is the most important. If someone remembers your suit and not your smile, you didn't smile enough.

When you have nothing important or interesting to say, don't let anyone persuade you to say it.

Luck is what happens when preparation meets opportunity.

Nothing worthwhile is ever learned in ten easy lessons.

An elderly lady was asked by a child if she were young or old. "My dear," she replied, "I have been young a very long time."

Criticism never built a house, wrote a play, composed a song, painted a picture or improved a marriage.

No one is guaranteed happiness. Life just gives each person time and space. It's up to us to fill it with joy.

•••••

Have you checked our website lately—socalcamellias.com. Thanks to our webmasters, Jac and Kathy Fagundo. If you have any comments or suggestions for them, their e-mail address is fagundo@earthlink.net.

EXCERPTS FROM A LETTER FROM JENNIFER TREHANE, DORSET, ENGLAND

I noted your thoughts on winter chilling of camellias, Mel. Our main camellia researcher, Margaret Scott, started a project to investigate the effects of both temperature and light intensity on the life cycle of camellias, but ran out of money so we only have tentative results. It would be good if some PhD student could take it on.

I rather think that there is no chilling need because the autumn blooming camellias flower before temperatures drop. Also, it is possible to get cold hardy spring blooming cultivars into bloom before Christmas either by gibbing or giving them higher temperatures under glass. I think it is a case of requiring differing time periods for cellular build up and differentiation within the flower buds, following bud initiation in mid-summer, according to the species

background and differing cultivars.

My personal belief to back this up is that sasanquas and their relatives (hiemalis and vernalis) which have short development times all have small, simple flowers, as do many of the early spring flowering species and hybrids. I believe that it is no accident that the big bloomers tend to be later in the wild as well. The retics are a case in point.

As we know, spring bloomers do go through a period of dormancy, or semi-dormancy, during winter, but I personally don't think this is a "chilling requirement."

Genera which require winter chilling as a necessary part of their life cycle, such as cold climate Vaccinium, will not break dormancy sufficient for flower bud development until their required chilling hours have been met.

PACIFIC CAMELLIA SOCIETY 37th Annual Show – Descanso Gardens January 12 and 13, 2002

Japonica—Large/Very Large

Best Single	'Han-Ling Snow'	Les & JoAnn Brewer
Runner-up Single	'Edna Bass Variegated'	Sergio & Elsie Bracci
Court of Honor Single	'Carter's Sunburst'	Mel & Bobbie Belcher
Best Tray of 3	'Han-Ling Snow'	Les & JoAnn Brewer
Runner-up Tray of 3	'Grand Prix'	Sergio & Elsie Bracci
Court of Honor Tray of 3	'Snow Chan'	Sergio & Elsie Bracci

Special Culture

Best Single	'Elegans Champagne'	Mel & Bobbie Belcher
Runner-up Single	'Royal Velvet'	Mel & Bobbie Belcher
Court of Honor	'Tomorrow Park Hill'	Sergio & Elsie Bracci
Best Tray of 3	'Show Time'	Sergio & Elsie Bracci
Runner-up Tray of 3	'Grand Prix'	Sergio & Elsie Bracci
Court of Honor	'Mathotiana Supreme'	D. T. Gray Family

Japonica—Medium

Best Single	'Grand Marshal'	Dale & Mary Kay Mittag
Runner-up Single	'Mrs. George Bell'	Les & JoAnn Brewer
Court of Honor	'Firedance Variegated'	Dale & Mary Kay Mittag
Best Tray of 3	'Nuccio's Carousel'	Les & JoAnn Brewer
Runner-up Tray	'Firedance Variegated'	Jac Fagundo
Court of Honor	'Rudy's Magnoliaeflora'	Les & JoAnn Brewer

Special Culture

Best Single	'Nuccio's Jewel'	Mel & Bobbie Belcher
Runner-up Single	'In The Red'	D. T. Gray Family
Court of Honor Single	'Black Magic'	D. T. Gray Family
Best Tray of 3	'Hara-No-Utena'	D. T. Gray Family
Runner-up Tray	'Firedance Variegated'	D. T. Gray Family
Court of Honor	'Nuccio's Carousel'	D. T. Gray Family

Japonica—Small or Miniature

Best Single	'Maroon & Gold'	Tom & Dody Gilfoy
Runner-up Single	'Tama-Peacock'	Julius & Dorothy Christinson
Court of Honor Single	'Takanini'	Don & Mary Bergamini
Best Tray of 3	'Little Babe Var.'	Don & Mary Bergamini
Runner-up Tray	'Splash-O-White'	Sergio & Elsie Bracci
Court of Honor	'Buddy Variegated'	Don & Mary Bergamini

Special Culture

Best Single	'Irene'	Marvin & Virginia Belcher
Runner-up Single	'Lil Schaeffer'	Don & Mary Bergamini
Court of Honor Single	'Demi-Tasse'	Julius & Dorothy Christinson
Best Tray of 3	'Maroon & Gold'	Bradford King

Reticulata or Reticulata Hybrid

Best Single	'LASCA Beauty'	Sergio & Elsie Bracci
Runner-up Single	'Christine Gonos'	Don & Mary Bergamini
Court of Honor	'Emma Gaeta Variegated'	Don & Mary Bergamini
Best Tray of 3	'LASCA Beauty'	Don & Mary Bergamini
Runner-up Tray	'Emma Gaeta Variegated'	Sergio & Elsie Bracci
Court of Honor Tray	'Kohinor'	

Special Culture

Best Single	'Harold L. Paige'	Mel & Bobbie Belcher
Runner-up Single	'LASCA Beauty'	Mel & Bobbie Belcher
Court of Honor	'Dr. Clifford Parks'	Mel & Bobbie Belcher
Best Tray of 3	'Dr. Clifford Parks'	Sergio & Elsie Bracci

Non-Reticulata Hybrid

Best Single	'Coral Delight Variegated'	David & Susan Trujillo
Runner-up Single	'First Blush'	David & Susan Trujillo
Court of Honor Single	'Autumn Jewel'	D. T. Gray Family
Best Tray of 3	'Waltz Time'	D. T. Gray Family
Runner-up Tray of 3	'Freedom Bell'	Sergio & Elsie Bracci
Court of Honor Tray	'Julie Variegated'	Don & Mary Bergamini

Special Culture

Best Single	'Pink Dahlia'	D. T. Gray Family
Runner-up Single	'Angel Wings'	D. T. Gray Family

Species

Best	'Egao'	Julius & Dorothy Christinson
Runner-up	'Shibori Egao'	D. T. Gray Family
Court of Honor	'Grady's Egao'	Don & Mary Bergamini
Best Tray of 3	'Shibori Egao'	Sergio & Elsie Bracci
Runner-up Tray	'Star Above Star'	Bradford King
Court of Honor	'Shishi-Gashira'	Sergio & Elsie Bracci

Collector's Tray of 3 Mixed Varieties

Best Tray	'Grace Albritton,' Mrs. George Bell', 'Tomorrow Park Hill'	Sergio & Elsie Bracci
Runner-up Tray	'Mansize' 'Nuccio's Gem', 'Elegans Champagne'	D. T. Gray Family
Court of Honor Tray	'Buddy Variegated', 'Julie Variegated', 'Frank Houser Variegated'	Don & Mary Bergamini

Collector's Tray of 6 Different Varieties

Best	'Frank Houser', 'Emma Gaeta Variegated', 'LASCA Beauty', 'Dr. Clifford Parks', 'Queen Bee', 'Arcadia'	Sergio & Elsie Bracci
Runner-up	'Larry Piet', 'Francie L. Var.' 'Junior Prom', 'Edna Bass Variegated', 'Linda Carol', 'Dr. Clifford Parks Variegated'	Sergio & Elsie Bracci
Court of Honor	'Bob Hope Var.', 'Miss Tulare', 'Coral Delight Variegated', 'Maroon & Gold', 'Nuccio's Carousel', 'Rudy's Magnoliaeflora'	Les & JoAnn Brewer

Best Seedling	'Mansize' Seedling	Don & Mary Bergamini
----------------------	--------------------	----------------------

Novice**Large/Very Large**

Best	'Elegans Splendor'	Mary Lou Iman
Runner-up	'Lucky Star'	Robert & Mary Sheriff
Court of Honor	'C. M. Wilson'	Robert Martin

Medium/Small/Miniature

Best	'Herme'	Robert Martin
Runner-up	'Debutante'	Robert & Mary Sheriff
Court of Honor	'Margaret Davis'	Robert & Mary Sheriff

Intermediate**Large/Very Large**

Best	'Carter's Sunburst Variegated'	Edward Barbieri
Runner-up	'Lucy Stewart'	Edward Barbieri
Court of Honor	'Silver Waves'	Edward Barbieri

Medium/Small/Miniature

Best	'Freedom Bell'	George & Karen Harrison
Runner-up	'Demi-Tasse'	Elizabeth Lent
Court of Honor	'Sweet Jane'	Robert & Mary Sheriff
Best Tray of 3	'Grand Marshal'	Edward Barbieri
Runner-up Tray of 3	'Debutante'	Mary Ann Paullin

ORANGE COUNTY CAMELLIA SOCIETY

2nd Annual Camellia Show

January 19 and 20, 2002

Japonica—Large/Very Large

Best Single	'Royal Velvet'	Todd & Lindsey Brewer
Runner-up Single	'Han-Ling Snow'	Les & JoAnn Brewer
Court of Honor e	'Moonlight Bay'	Tom & Dody Gilfoy
Best Tray of 3	'Junior Prom'	David & Susan Trujillo
Runner-up Tray of 3	'Grand Prix'	Tom & Dody Gilfoy
Court of Honor Tray	'Kramer's Supreme'	Joanna McClure

Japonica—Medium

Best Single	'Firedance Variegata	D. T. Gray Family
Runner-up Single	'Wildfire'	Tom & Dody Gilfoy
Court of Honor	'Rudy's Magnoliaeflora'	Les & JoAnn Brewer
Best Tray of 3	'Margaret Davis'	Sergio & Elsie Bracci
Runner-up Tray	'Nuccio's Carousel'	Sergio & Elsie Bracci
Court of Honor Tray 3	'Rudy's Magnoliaeflora'	Les & JoAnn Brewer

Japonica—Small

Best Single	'Ave Maria'	Mel & Bobbie Belcher
Runner-up Single	'Red Hots'	Mel & Bobbie Belcher
Court of Honor Single	'Maroon & Gold'	Tom & Dody Gilfoy
Best Tray of 3	'Splash-O-White'	Sergio & Elsie Bracci
Runner up Tray of 3	'Pink Perfection'	Dale & Mary Kay Mittag
Court of Honor Tray of 3	'Red Hots'	David & Susan Trujillo

Japonica—Miniature

Best Single	'Lemon Drop'	Mel & Bobbie Belcher
Runner-up Single	'Fircone Variegated'	Dale & Mary Kay Mittag
Court of Honor Tray	'Something Beautiful'	Tom & Dody Gilfoy

Japonica—Special Culture

Best Large/Very Large	'Tomorrow Park Hill'	Mel & Bobbie Belcher
Runner-up	'Mrs. D. W. Davis Special'	Sergio & Elsie Bracci
Court of Honor	'Grand Prix'	Mel & Bobbie Belcher
Best Medium	'Nuccio's Carousel'	D. T. Gray Family
Runner-up Medium	'Nuccio's Pearl'	Sergio & Elsie Bracci
Court of Honor	'In The Red'	D. T. Gray Family
<i>Best Small</i>	'Maroon & Gold'	Bradford King
Runner-up Small	'Dahlohnega'	Sergio & Elsie Bracci
Court of Honor	'Splash-O-White'	Sergio & Elsie Bracci
Best Miniature	'Little Slam Variegated'	Sergio & Elsie Bracci
Runner-up Miniature	'Men's Mini'	Julius & Dorothy Christinson

Reticulata or Reticulata Hybrid

Best Single	'Frank Houser'	Sergio & Elsie Bracci
Runner-up Single	'Ruta Hagmann'	Mel & Bobbie Belcher
Court of Honor	'Dr. Clifford Parks'	Les & JoAnn Brewer
Best Tray of 3	'Valley Knudsen'	Tom & Dody Gilfoy
Runner-up Tray	'Emma Gaeta Variegated'	Sergio & Elsie Bracci
Court of Honor Tray	'Frank Houser'	Sergio & Elsie Bracci

Reticulata—Special Culture

Best Single	'Frank Houser Variegated'	Sergio & Elsie Bracci
Runner-up Single	'John Hunt'	Sergio & Elsie Bracci
Court of Honor	'LASCA Beauty'	Mel & Bobbie Belcher
Non-Reticulata Hybrid		
Best Single	'Waltz Time Variegated'	Mel & Bobbie Belcher
Runner-up Single	'Buttons 'N Bows'	Sergio & Elsie Bracci
Court of Honor Single	'Joe Nuccio'	David & Susan Trujillo
Best Tray of 3	'Waltz Time Variegated'	Mel & Bobbie Belcher
Runner-up Tray of 3	'Waltz Time'	David & Susan Trujillo
Court of Honor	'Coral Delight Variegated'	David & Susan Trujillo

Non-Reticulata Hybrid—Special Culture

Best Single	'Pink Dahlia'	D. T. Gray Family
Runner-up Single	'Elsie Jury'	Sergio & Elsie Bracci
Court of Honor	'Kramer's Fluted Coral'	Sergio & Elsie Bracci

Species

Best Single	'Egao'	Mel & Bobbie Belcher
Runner-up Single	'Shibori Egao'	Mel & Bobbie Belcher
Court of Honor Single	'Star Above Star'	Bradford King
Best Tray of 3	'Shibori Egao'	Sergio & Elsie Bracci
Runner-up Tray of 3	'Star Above Star'	Bradford King

Collector's Tray—3 mixed varieties

Best Tray	'Fircone Variegated', 'Firedance Variegated', 'Edna Bass Variegated'	Sergio & Elsie Bracci
Runner-up Tray	'Demi-Tasse', 'Pink Wings', 'Nuccio's Carousel'	D. T. Gray Family
Court of Honor Tray	'Paper Dolls', 'Jennie Mills', 'Nuccio's Bella Rossa'	Les & JoAnn Brewer

Best Sport

Tom & Dody Gilfoy

Best Fragrant Bloom

'High Fragrance'

Tom & Dody Gilfoy

Novice

Best Single	'Debutante'	Janet Wurtman
1st Runner-up	'Princess Lavender'	Stephen Mefford
2nd Runner-up	'Mrs. Tingley'	Joyce Thompson

Intermediate

Best Single	'Hilda Jamieson'	Marty Hammond
1st Runner-up	'Nuccio's Jewel'	Marty Hammond
2nd Runner-up	'Silver Tower'	Marty Hammond

SOUTHERN CALIFORNIA CAMELLIA SOCIETY

54th Annual Camellia Show—Descanso Gardens

January 26 and 27, 2002

Japonica—Large/Very Large

Best Single	'Carter's Sunburst'	Dale & Mary Kay Mittag
Runner-up Single	'Han-Ling Snow'	Les & JoAnn Brewer
Court of Honor Single	'Elegans Splendor'	Sergio & Elsie Bracci
Best Tray of 3	'Tiffany'	Tom & Dody Gilfof
Runner-up Tray of 3	'Royal Velvet'	Jac Fagundo
Court of Honor Tray of 3	'Mathotiana'	Marvin & Virginia Belcher
Special Culture		
Best Single	'Miss Charleston Variegated'	D. T. Gray Family
Runner-up Single	'Tomorrow Park Hill'	Mel & Bobbie Belcher
Court of Honor Single	'Royal Velvet'	Sergio & Elsie Bracci
Best Tray of 3	'Grand Prix'	Sergio & Elsie Bracci
Runner-up Tray of 3	'Royal Velvet'	Sergio & Elsie Bracci
Court of Honor Tray	'Miss Charleston Variegated'	D. T. Gray Family

Japonica—Medium

Best Single	'Nuccio's Gem'	Mel & Bobbie Belcher
Runner-up Single	'Mrs. George Bell'	Les & JoAnn Brewer
Court of Honor Single	'Betty's Beauty'	Sergio & Elsie Bracci
Best Tray of 3	'Nuccio's Carousel'	Sergio & Elsie Bracci
Runner-up Tray of 3	'Rudy's Magnoliaeflora'	Les & JoAnn Brewer
Court of Honor Tray	'Margaret Davis'	Sergio & Elsie Bracci
Special Culture		
Best Single	'Rudolph Variegated'	Sergio & Elsie Bracci
Runner-up Single	'Margaret Davis'	David & Susan Trujillo
Court of Honor	'Midnight'	Sergio & Elsie Bracci
Best Tray of 3	'Hara-No-Utena'	D. T. Gray Family

Japonica—Small

Best Single	'Maroon & Gold'	Tom & Dody Gilfof
Runner-up Single	'Demi-Tasse'	Mel & Bobbie Belcher
Court of Honor Single	'Ave Maria'	David & Susan Trujillo
Special Culture		
Best Single	'Grace Albritton'	Sergio & Elsie Bracci
Runner-up Single	'Maroon & Gold'	Sergio & Elsie Bracci
Court of Honor	'Baby Pearl'	Sergio & Elsie Bracci

Japonica—Miniature

Best Single	'Grace Albritton'	Les & JoAnn Brewer
Runner-up Single	'Kewpie Doll'	Sergio & Elsie Bracci
Court of Honor Single	'Lemon Drop'	David & Susan Trujillo
Special Culture		
Best Single	'Man Size'	Sergio & Elsie Bracci

Japonica—Small or Miniature

Best Tray of 3	'Red Hots'	D. T. Gray Family
Runner-up Tray of 3	'Fircone Variegated'	Sergio & Elsie Bracci
Court of Honor Tray of 3	'Hishi-Karaito'	Tom & Dody Gilfof
Special Culture		
Best Tray of 3	'Demi Tasse'	Sergio & Elsie Bracci

Reticulata or Reticulata Hybrid

Best Single	'Emma Gaeta Variegated'	Rudy Blanco
Runner-up Single	'Frank Houser'	Les & JoAnn Brewer
Court of Honor Single	'LASCAs Beauty'	Mel & Bobbie Belcher
Best Tray of 3	'Dr. Clifford Parks'	Les & JoAnn Brewer
Runner-up Tray of 3	'Emma Gaeta Variegated'	Sergio & Elsie Bracci
Court of Honor Tray	'Valley Knudsen'	Tom & Dody Gilfoy

Special Culture

Best Single	'Frank Houser'	Sergio & Elsie Bracci
Runner-up Single	'Ruta Hagmann'	Mel & Bobbie Belcher
Court of Honor Single	'Margaret Hilford'	Sergio & Elsie Bracci
Best Tray of 3	'Valley Knudsen'	Sergio & Elsie Bracci
Runner-up Tray of 3	'Frank Houser'	Sergio & Elsie Bracci
Court of Honor Tray	'Patricia Haskey'	Sergio & Elsie Bracci

Non-Reticulata Hybrid

Best Single	'Waltz Time Variegated'	Mel & Bobbie Belcher
Runner-up Single	'First Blush'	David & Susan Trujillo
Court of Honor	'Coral Delight Variegated'	David & Susan Trujillo
Best Tray of 3	'Waltz Time'	David & Susan Trujillo
Runner-up Tray of 3	'Freedom Bell'	Sergio & Elsie Bracci
Court of Honor Tray	'Elsie Jury'	Sergio & Elsie Bracci

Special Culture

Best Single	'Lucky Star'	Sergio & Elsie Bracci
Runner-up Single	'Spring Daze'	Sergio & Elsie Bracci
Court of Honor Single	'Julie Variegated'	Sergio & Elsie Bracci
Best Tray of 3	'Spring Daze'	Sergio & Elsie Bracci
Runner-up Tray	'Coral Delight Variegated'	Sergio & Elsie Bracci

Species

Best Single	'Shibori Egao'	Boris & Kathryn Korin
Runner-up Single	'Egao'	Mel & Bobbie Belcher
Court of Honor Single	'Grady's Egao'	Bradford King
Best Tray of 3	'Shibori Egao'	Sergio & Elsie Bracci
Runner-up Tray of 3	'Shishi Gashira'	Les & JoAnn Brewer
Court of Honor Tray	'Star Above Star'	Bradford King

Collector's Tray of 3 Mixed Varieties

Best Tray	'Buttons 'N Bows', 'Betty's Beauty', 'Tomorrow Park Hill'	Sergio & Elsie Bracci
-----------	---	-----------------------

Runner-up Tray	'Marchioness of Salisbury', 'Rudolph', 'Dr. Clifford Parks'	Les & JoAnn Brewer
----------------	---	--------------------

Court of Honor	'Little Michael', 'Magnoliaeflora', 'Valley Knudsen'	Les & JoAnn Brewer
----------------	--	--------------------

Best Seedling

Descanso Gardens

Novice

Best Large/Very Large	'Elegans Chandler'	Kathie Heine
Best Medium/Min/Small	'Grand Marshal'	W. M. MacArthur
Runner-up	'Pink Pagoda'	Bill Taylor

Novice Court of Honor

'Nuccio's Gem'

W. M. MacArthur

Intermediate

Best Large/V. Large

'Nuccio's Bella Rossa'

Robert & Mary Sheriff

Runner-up Large/V. Large

'Tiffany'

Mary Ann Paullin

Court of Honor

'C. M. Wilson'

Robert Martin

Best Medium, Min/ Small

'Lemon Drop'

Robert & Mary Sheriff

Runner-up

'Margaret Davis'

Robert & Mary Sheriff

Court of Honor

'Herme'

Robert Martin

SAN DIEGO CAMELLIA SOCIETY

55th Annual Show

February 2 and 3, 2002

Japonica—Large/Very Large

Best Single

'Carter's Sunburst Pink'

Sergio & Elsie Bracci

Runner-up Single

'Edna Bass'

Sergio & Elsie Bracci

Court of Honor Single

'Snow Chan'

Sergio & Elsie Bracci

Best Tray of 3

'Royal Velvet'

Les & JoAnn Brewer

Runner-up Tray of 3

'Katie Variegated'

Sergio & Elsie Bracci

Court of Honor Tray

'Tomorrow Park Hill'

Sergio & Elsie Bracci

Japonica—Medium

Best Single

'Black Magic'

D. T. Gray Family

Runner-up Single

'Nuccio's Jewel'

Sergio & Elsie Bracci

Court of Honor

'Funny Face Betty'

Les & JoAnn Brewer

Japonica—Small or Miniature

Best Single

'Grace Albritton'

Les & JoAnn Brewer

Runner-up Single

'Demi-Tasse'

Sergio & Elsie Bracci

Court of Honor Single

'Hishi-Karaito'

David & Susan Trujillo

Japonica—Medium, Small or Miniature

Best Tray of 3

'Nuccio's Carousel'

Sergio & Elsie Bracci

Runner-up Tray of 3

'Nuccio's Cameo'

Sergio & Elsie Bracci

Court of Honor Tray of 3

'Haru-No-Utena'

D. T. Gray Family

Reticulata or Reticulata Hybrid

Best Single

'Frank Houser'

Sergio & Elsie Bracci

Runner-up Single

'Dr. Clifford Parks'

Les & JoAnn Brewer

Court of Honor Single

'Emma Gaeta Variegated'

Rudy Blanco

Best Tray of 3

'Frank Houser'

Sergio & Elsie Bracci

Runner-up Tray

'Emma Gaeta Variegated'

Rudy Blanco

Court of Honor Tray

'Frank Houser Var.'

Sergio & Elsie Bracci

Non-Reticulata Hybrid

Best Single	'First Blush'	David & Susan Trujillo
Runner-up Single	'Elsie Jury'	Sergio & Elsie Bracci
Court of Honor Single	'Autumn Jewel'	Sergio & Elsie Bracci
Best Tray of 3	'Spring Daze'	Sergio & Elsie Bracci
Runner-up Tray of 3	'Coral Delight Variegated'	David & Susan Trujillo
Court of Honor Tray of 3	'Kramer's Fluted Coral'	Sergio & Elsie Bracci

Special Culture

Best Japonica	'Elegans Champagne'	Sergio & Elsie Bracci
Runner-up Japonica	'Royal Velvet'	Sergio & Elsie Bracci
Court of Honor Japonica	'Nuccio's Jewel'	Sergio & Elsie Bracci
Best Reticulata	'Valentine Day'	Sergio & Elsie Bracci
Runner-up Reticulata	'Margaret Hilford Var.'	Sergio & Elsie Bracci
Court of Honor	'Dobro'	Sergio & Elsie Bracci
Best Non-Reticulata Hybrid	'Julia'	Sergio & Elsie Bracci
Runner-up Non-Reticulata	'South Seas'	Sergio & Elsie Bracci
Court of Honor	'Kramer's Fluted Coral'	Sergio & Elsie Bracci

Collector's Tray of 3 Mixed Varieties

Best Tray	'Splash-O-White', 'Firedance Var.', 'Carter's Sunburst Pink'	Sergio & Elsie Bracci
Runner-up Tray	'Red Hots', Raspberry Ice', 'Frank Houser'	D. T. Gray Family
Court of Honor	'Little Michael', 'Mrs. George Bell', 'Valentine Day'	Les & JoAnn Brewer

Best Seedling/Sport

'Kramer's Supreme' Sport D. T. Gray Family

Best 1-2 year old Grafted Plant

'Valentine Day Variegated' Dean Turney

Dr. Roy Tess Memorial Award

Best	'Tiffany'	Joanna & Lew Gary
Runner-up	'Valentine Day'	Michael Mathos
Court of Honor	'Kramer's Supreme'	Joanna & Lew Gary

Novice

Best	'Tiffany'	Peggy Roberts
Runner-up	'Kramer's Supreme'	Peggy Roberts
Court of Honor	'Prima Ballerina'	Peggy Roberts

Intermediate

Best	Arcadia'	John Nichols
Runner-up	'Tiffany'	Auralie Finch
Court of Honor	'C. M. Wilson'	Nora Lovejoy

SOUTHERN CALIFORNIA CAMELLIA SOCIETY

30th Annual Camellia Show—Huntington Gardens

February 9 and 10, 2002

Japonica—Large/Very Large

Best Single	'Carter's Sunburst'	Dale & Mary Kay Mittag
Runner-up Single	'Chow's Han-Ling'	Les & JoAnn Brewer
Court of Honor Single	'Moonlight Bay'	Tom & Dody Gilfoy
Best Tray of 3	'Katie Variegated'	Dale & Mary Kay Mittag
Runner-up Tray of 3	'Mathotiana'	Marvin & Virginia Belcher
Court of Honor Tray	'Tomorrow Park Hill'	Sergio & Elsie Bracci
Best Tray of 5	'Tomorrow Park Hill'	Sergio & Elsie Bracci
Runner-up Tray of 5	'Royal Velvet'	Sergio & Elsie Bracci
Court of Honor Tray	'Han-Ling Snow'	Les & JoAnn Brewer

Japonica—Medium

Best Single	'Glen 40 Variegated'	Mel & Bobbie Belcher
Runner-up Single	'Nuccio's Carousel'	George & Karen Harrison
Court of Honor Single	'Wildfire'	Sergio & Elsie Bracci
Best Tray of 3	'Nuccio's Carousel'	Les & JoAnn Brewer
Runner-up Tray of 3	'Firedance Variegated'	Tom & Dody Gilfoy
Court of Honor	'Eleanor Martin Supreme'	Tom & Dody Gilfoy
Best Tray of 5	'Nuccio's Carousel'	Sergio & Elsie Bracci
Runner-up Tray	'Haru-No-Utena'	Julius & Dorothy Christinson
Court of Honor Tray of 5	'Wildfire'	Jim & Armida Wilkin

Japonica—Small

Best Single	'Ave Maria'	David & Susan Trujillo
Runner-up Single	'Hishi-Karaito'	Boris & Kathryn Korin
Court of Honor Single	'Red Hots'	Mel & Bobbie Belcher

Japonica—Miniature

Best Single	'Something Beautiful'	Tom & Dody Gilfoy
Runner-up Single	'Lemon Drop'	Sergio & Elsie Bracci
Court of Honor Single	'Little Babe Var.'	Don & Mary Bergamini

Japonica—Small or Miniature

Best Tray of 3	'Pink Perfection'	Dale & Mary Kay Mittag
Runner-up Tray of 3	'Red Hots'	D. T. Gray Family
Court of Honor tray of 3	'Hishi-Karaito'	Tom & Dody Gilfoy
Best Tray of 5	'Hishi-Karaito'	Tom & Dody Gilfoy
Runner-up Tray of 5	'Tinsie'	Don & Mary Bergamini
Court of Honor Tray	'Little Babe Var.'	Don & Mary Bergamini

Reticulata or Reticulata Hybrid

Best Single	'Frank Houser'	Sergio & Elsie Bracci
Runner-up Single	'Emma Gaeta Variegated'	Mel & Bobbie Belcher
Court of Honor Single	'S. P. Dunn'	Sergio & Elsie Bracci
Best Tray of 3	'W. P. Gilley'	Sergio & Elsie Bracci
Runner-up Tray	'Frank Houser Var.'	Sergio & Elsie Bracci
Court of Honor Tray	'Kohinor'	
Best Tray of 5	'Emma Gaeta Variegated'	Rudy Blanco
Runner-up Tray of 5	'Dr. Clifford Parks'	Tom & Dody Gilfoy
Court of Honor Tray	'Valley Knudsen'	Tom & Dody Gilfoy

Non-Reticulata Hybrid

Best Single	'Spring Daze'	Les & JoAnn Brewer
Runner-up Single	'Hot Pink'	Les & JoAnn Brewer
Court of Honor Single	'Autumn Jewel'	David & Susan Trujillo
Best Tray of 3	'Night Rider'	David & Susan Trujillo
Runner-up Tray of 3	'South Seas'	Les & JoAnn Brewer
Court of Honor Tray of 3	'Nicky Crisp'	Sergio & Elsie Bracci
Best Tray of 5	'Spring Daze'	Les & JoAnn Brewer
Runner-up Tray of 5	'South Seas'	Les & JoAnn Brewer
Court of Honor Tray	'Coral Delight Var.'	David & Susan Trujillo

Special Culture—Singles**Japonica**

Best	'Miss Charleston Variegated'	D. T. Gray Family
Runner-up	'Firedance Variegated'	Sergio & Elsie Bracci
Court of Honor	'Elegans Supreme'	Sergio & Elsie Bracci

Reticulata

Best	'Margaret Hilford'	Sergio & Elsie Bracci
Runner-up	'Emma Gaeta Variegated'	Mel & Bobbie Belcher
Court of Honor	'John Hunt'	Sergio & Elsie Bracci

Non-Reticulata

Best	'Pink Dahlia'	Sergio & Elsie Bracci
Runner-up	'Lucky Star'	Sergio & Elsie Bracci
Court of Honor	'Kramer's Fluted Coral Var.'	Sergio & Elsie Bracci

Species

Best Single	'Shibori-Egao'	Les & JoAnn Brewer
Runner-up Single	'Star Above Star'	Bradford King
Court of Honor Single	'Egao'	Mel & Bobbie Belcher

Collector's Tray of 3 Mixed Varieties

Best Tray	'Spring Daze', Betty's Beauty', 'Tomorrow Park Hill'	Sergio & Elsie Bracci'
Runner-up Tray	'Little Michael', 'Nuccio's Carousel', 'Pink Wings'	D. T. Gray Family
Court of Honor Tray	'Hishi-Karaito', 'Jennie Mills', 'Frank Houser'	Les & JoAnn Brewer

Best Seedling

Rudy Blanco

Novice

Best Large/Very Large	'Elegans Chandler'	Elynor Baughman
Best Medium/Small/Min.	'Melinda Hackett'	Elynor Baughman
Runner-up Medium/Small	'Herme'	Elynor Baughman
Court of Honor	'Debutante'	Elynor Baughman

Intermediate

Best Large/Very Large	'Elegans Splendor'	Therese Piech
Runner-up	'Elegans Chandler'	Elizabeth Lent
Court of Honor	'Tiffany'	Mary Ann Paullin
Best Medium/Small	'Nuccio's Carousel'	George & Karen Harrison
Runner-up Medium/Small	'Debutante'	Elizabeth Lent
Court of Honor	'Pink Superlative'	Elizabeth Lent

POMONA VALLEY CAMELLIA SOCIETY
55th Annual Camellia Show
February 16 and 17, 2002

Japonica—Large/Very Large

Best Single	'Royal Velvet'	Jac Fagundo
Runner-up Single	'Han-Ling Snow'	Les & JoAnn Brewer
Court of Honor Single	'Carter's Sunburst'	Dale & Mary Kay Mittag
Best Tray of 3	'Carter's Sunburst'	Dale & Mary Kay Mittag
Runner-up Tray of 3	'Royal Velvet'	Sergio & Elsie Bracci
Court of Honor Tray of 3	'Moonlight Bay'	Tom & Dody Gilfooy
Best Tray of 5	'Royal Velvet'	Jac Fagundo
Runner-up Tray of 5	'Mathotiana'	Marvin & Virginia Belcher
Court of Honor Tray o	'Elegans Champagne'	Sergio & Elsie Bracci

Japonica—Medium

Best Single	'Mrs. George Bell'	Dale & Mary Kay Mittag
Runner-up Single	'Firedance Variegated'	Jac Fagundo
Court of Honor Single	'Grand Marshal'	Dale & Mary Kay Mittag
Best Tray of 3	'Nuccio's Carousel'	Les & JoAnn Brewer
Runner-up Tray of 3	'Magnoliaeflora'	David & Susan Trujillo
Court of Honor	'Hara-No-Utena'	Julius & Dorothy Christinson
Best Tray of 5	'Cloisonne'	Marvin & Virginia Belcher
Runner-up Tray of 5	'Wildfire'	Mel & Bobbie Belcher
Court of Honor Tray	'Ragland Supreme'	Marvin & Virginia Belcher

Japonica—Small

Best Single	'Red Hots'	Mel & Bobbie Belcher
Runner-up Single	'Black Tie'	Mel & Bobbie Belcher
Court of Honor	'Marchioness of Salisbury'	Sergio & Elsie Bracci
Best Tray of 3	'Pink Perfection'	Dale & Mary Kay Mittag
Runner-up Tray of 3	'Hishi-Karaito'	Boris & Kathryn Korin
Court of Honor Tray of 3	'Red Hots'	D. T. Gray Family
Best Tray of 5	'Hishi-Karaito'	Tom & Dody Gilfooy
Runner-up Tray of 5	'Pink Perfection'	Dale & Mary Kay Mittag
Court of Honor Tray	'Maroon & Gold'	Mel & Bobbie Belcher

Japonica—Miniature

Best Single	'Grace Albritton'	Les & JoAnn Brewer
Runner-up Single	'Something Beautiful'	Dale & Mary Kay Mittag
Court of Honor Single	'Man Size'	Julius & Dorothy Christinson
Best Tray of 3	'Man Size'	Mel & Bobbie Belcher
Runner-up Tray	'Grace Albritton'	Julius & Dorothy Christinson
Court of Honor Tray	'Little Michael'	Julius & Dorothy Christinson
Best Tray of 5	'Tootsie'	Julius & Dorothy Christinson
Runner-up Tray	'Little Slam'	Julius & Dorothy Christinson
Court of Honor Tray	'Papoose'	Mel & Bobbie Belcher

Reticulata or Reticulata Hybrid—Very Large

Best Single	'Frank Houser Var.'	Sergio & Elsie Bracci
Runner-up Single	'Frank Houser'	Jane Brady
Court of Honor Single	'Curtain Call'	Paul Karukstis
Best Tray of 3	'Dr. Clifford Parks'	Les & JoAnn Brewer
Runner-up Tray	'Frank Houser Var.'	Sergio & Elsie Bracci

Court of Honor Tray	'Emma Gaeta Var.'	Sergio & Elsie Bracci
Best Tray of 5	'Pharoah'	Sergio & Elsie Bracci
Runner-up Tray of 5	'Dr. Clifford Parks'	Sergio & Elsie Bracci
Court of Honor Tray	'Crinoline'	Sergio & Elsie Bracci
Reticulata or Reticulata Hybrid—Large		
Best Single	'W. P. Gilley Variegated'	Mel & Bobbie Belcher
Runner-up Single	'Valentine Day'	Dean Turney
Court of Honor Single	'Miss Tulare'	Sergio & Elsie Bracci
Best Tray of 3	'Valley Knudsen'	Tom & Dody Gilfoy
Runner-up Tray of 3	'Miss Tulare'	Les & JoAnn Brewer
Court of Honor Tray of 3	'Fire Chief Variegated'	Sergio & Elsie Bracci
Best Tray of 5	'Cornelian'	Sergio & Elsie Bracci
Runner-up Tray of 5	'W. P. Gilley Var.'	Sergio & Elsie Bracci
Court of Honor Tray	'Valentine Day Var.'	Gene Snooks
Reticulata or Reticulata Hybrid—Small or Medium		
Best Single	'Bev Piet Variegated'	Rudy Blanco
Runner-up Single	'Betty Ridley Var.'	David & Susan Trujillo
Court of Honor Single	'Fiesta Grande Var.'	Rudy Blanco
Best Tray of 3	'Fiesta Grande'	Rudy Blanco
Non-Reticulata Hybrid—Large/Very Large		
Best Single	'Anticipation Var.'	Boris & Kathryn Korin
Runner-up Single	'Super Star'	David & Susan Trujillo
Court of Honor Single	'El Dorado'	Les & JoAnn Brewer
Best Tray of 3	'Super Star'	Julius & Dorothy Christinson
Runner-up Tray of 3	'Elsie Jury'	Sergio & Elsie Bracci
Court of Honor Tray of 3	'El Dorado'	Les & JoAnn Brewer
Best Tray of 5	'El Dorado'	Les & JoAnn Brewer
Runner-up Tray of 5	'Super Star'	Julius & Dorothy Christinson
Non-Reticulata Hybrid—Medium		
Best Single	'Nicky Crisp'	Dale & Mary Kay Mittag
Runner-up Single	'Debbie'	Les & JoAnn Brewer
Court of Honor Single	'Pink Dahlia'	David & Susan Trujillo
Best Tray of 3	'Waltz Time Variegated'	Mel & Bobbie Belcher
Runner-up Tray of 3	'Lucky Star'	Dale & Mary Kay Mittag
Best Tray of 5	'Waltz Time Variegated'	Mel & Bobbie Belcher
Runner-up Tray of 5	'Nicky Crisp'	Sergio & Elsie Bracci
Court of Honor Tray of 5	'South Seas'	Les & JoAnn Brewer
Non-Reticulata Hybrid—Small or Miniature		
Best Single	'Spring Daze'	Jac Fagundo
Runner-up Single	'Freedom Bell'	Marvin & Virginia Belcher
Court of Honor Single	'Coral Delight Var.'	Dale & Mary Kay Mittag
Best Tray of 3	'Spring Daze'	Les & JoAnn Brewer
Runner-up Tray of 3	'Night Rider'	Boris & Kathryn Korin
Court of Honor Tray	'Buttons 'N Bows'	Beth Stone
Best Tray of 5	'Freedom Bell'	Sergio & Elsie Bracci
Runner-up Tray of 5	'Spring Daze'	Sergio & Elsie Bracci
Special Culture		
Best Japonica	'Miss Charleston Variegated'	D. T. Gray Family

Runner-up Japonica	'Royal Velvet'	Julius & Dorothy Christinson
Court of Honor	'Mathotiana Supreme'	D. T. Gray Family
Best Reticulata	'Linda Carol'	Sergio & Elsie Bracci
Runner-up Reticulata	'Larry Piet'	Sergio & Elsie Bracci
Court of Honor Reticulata	'John Hunt'	Sergio & Elsie Bracci
Best Non-Reticulata	'First Blush'	Sergio & Elsie Bracci
Runner-up	'Kramer's Fluted Coral'	Sergio & Elsie Bracci
Court of Honor	'Lucky Star'	Sergio & Elsie Bracci
Species		
Best	'Egao'	David & Susan Trujillo
Runner-up	'Botan-Yuki'	David & Susan Trujillo
Court of Honor	'Dwarf Shishi'	D. T. Gray Family
Collector's Tray of 3 Mixed Varieties		
Best Tray	'Buttons 'N Bows', 'Elaine's Betty', 'Carter's Sunburst Blush'	Sergio & Elsie Bracci
Runner-up Tray	'Coral Delight Variegated', ' 'Firedance Variegated', 'Premier Variegated'	D. T. Gray Family
Court of Honor Tray	'Man Size', 'Ragland Supreme', 'Tata'	Marvin & Virginia Belcher
Best Yellow Bloom	'Ki-No-Moto #95'	Jac Fagundo
Best Fragrant Bloom	'High Fragrance'	David & Susan Trujillo
Best Seedling		Rudy Blanco
Novice		
Best	'Mathotiana'	Robert Decker II
Award of Merit	'Elegans Chandler'	Robert Decker II
Award of Merit	'Finlandia Variegated'	Ann Fraggos
Intermediate		
Best	'Silver Lace'	Ann Fraggos
Award of Merit	'Debutante'	Ann Fraggos
Award of Merit	'Mrs. Charles Cobb'	Paul & Nancy Speaker

SOUTHERN CALIFORNIA CAMELLIA COUNCIL

45th Annual Show—Descanso Gardens

February 23 and 24, 2002

Japonica—Large/Very Large

Best Single	'Grand Slam'	Mel Canfield
Runner-up Single	'Guilio Nuccio Variegated'	Jac Fagundo
Court of Honor Single	'Mathotiana'	Marvin & Virginia Belcher
Best Tray of 3	'Han-Ling Snow'	Les & JoAnn Brewer
Runner-up Tray of 3	'Elegans Splendor'	Sergio & Elsie Bracci
Court of Honor Tray of 3	'Royal Velvet'	Jane Brady
Best Tray of 6	'Elegans Champagne'	Sergio & Elsie Bracci
Runner-up Tray of 5	'Elegans Splendor'	Sergio & Elsie Bracci
Court of Honor Tray of 5	'Chandleri Elegans'	Beverly Crum

Japonica—Medium

Best Single	'Firedance'	Les & JoAnn Brewer
Runner-up Single	'Firedance Variegated'	Dale & Mary Kay Mittag
Court of Honor Single	'Nuccio's Carousel'	Les & JoAnn Brewer
Best Tray of 3	'Glen 40'	Dale & Mary Kay Mittag
Runner-up Tray of 3	'Firedance Variegated'	Mel Canfield
Court of Honor Tray	'Haru-No-Utena'	D. T. Gray Family
Best Tray of 5	'Cloisonne'	Marvin & Virginia Belcher
Runner-up Tray of 5	'Ragland Supreme'	Marvin & Virginia Belcher
Court of Honor Tray	'Nuccio's Carousel'	D. T. Gray Family

Japonica—Small

Best Single	'Pink Perfection'	Dale & Mary Kay Mittag
Runner-up Single	'Irene'	Marvin & Virginia Belcher
Court of Honor Single	'Demi-Tasse'	Mel & Bobbie Belcher

Japonica—Miniature

Best Single	'Fircone Variegated'	Mel & Bobbie Belcher
Runner-up Single	'Tootsie'	Boris & Kathryn Korin
Court of Honor Single	'Man Size'	Sergio & Elsie Bracci

Japonica—Small/Miniature

Best Tray of 3	'Red Hots'	D. T. Gray Family
Runner-up Tray of 3	'Pink Perfection'	Dale & Mary Kay Mittag
Court of Honor Tray of 3	'Man Size'	D. T. Gray Family
Best Tray of 5	'Pink Perfection'	Dale & Mary Kay Mittag
Runner-up Tray of 5	'Maroon & Gold'	Tom & Dody Gilfoy
Court of Honor Tray	'Little Slam Variegated'	Sergio & Elsie Bracci

Reticulata or Reticulata Hybrid

Best Single	'Frank Houser Variegated'	Sergio & Elsie Bracci
Runner-up Single	'Frank Houser'	Sergio & Elsie Bracci
Court of Honor Single	'Dr. Clifford Parks'	Les & JoAnn Brewer
Best Tray of 3	'Dr. Clifford Parks'	Les & JoAnn Brewer
Runner-up Tray	'Emma Gaeta Variegated'	David & Susan Trujillo
Court of Honor Tray of 3	'Royalty'	Sergio & Elsie Bracci
Best Tray of 5	'Valley Knudsen'	Mel Canfield
Runner-up Tray of 5	'Margaret Hilford'	Sergio & Elsie Bracci

Court of Honor Tray	'Emma Gaeta Var.'	Sergio & Elsie Bracci
Non-Reticulata Hybrid		
Best Single	'Spring Daze'	David & Susan Trujillo
Runner-up Single	'Lucky Star'	Dale & Mary Kay Mittag
Court of Honor Single	'Julia'	Jane Brady
Best Tray of 3	'Anticipation Variegated'	Boris & Kathryn Korin
Runner-up Tray of 3	'Lucky Star'	Sergio & Elsie Bracci
Court of Honor	'Kramer's Fluted Coral'	Dale & Mary Kay Mittag
Best Tray of 5	'Buttons 'N Bows'	Deniece Douglass
Runner-up Tray of 5	'Golden Gold'	Sergio & Elsie Bracci
Court of Honor Tray of 5	'Night Rider'	David & Susan Trujillo
Species		
Best Single	'Egao'	Mel & Bobbie Belcher
Runner-up Single	'Botan-Yuki'	Victor & Linda Rodriquez
Court of Honor Single	'Shibori-Egao'	Mel & Bobbie Belcher
Special Culture		
Japonica		
Best Large/V. Large	'Miss Charleston Variegated'	D. T. Gray Family
Runner-up	'Marie Mackall Variegated'	Sergio & Elsie Bracci
Court of Honor	'Easter Morn'	Sergio & Elsie Bracci
Best Med/Sm`	Grand Marshal Var.'	Julius & Dorothy Christinson
Runner-up	'Cherries Jubilee'	Sergio & Elsie Bracci
Court of Honor	'In The Red'	D. T. Gray Family
Reticulata or Reticulata Hybrid		
Best	'Linda Carol'	Sergio & Elsie Bracci
Runner-up	'Harold L. Paige'	Mel & Bobbie Belcher
Court of Honor	'Larry Piet'	Sergio & Elsie Bracci
Non-Reticulata Hybrid		
Best	'Lucky Star'	Sergio & Elsie Bracci
Runner-up	'Pink Dahlia Variegated'	Sergio & Elsie Bracci
Court of Honor	'First Blush'	Sergio & Elsie Bracci
Collector's Tray of 3 Mixed Varieties		
Best Tray	'Little Michael', 'Nicky Crisp', Queen Bee'	D. T. Gray Family
Runner-up Tray	'Mrs. George Bell', Spring Daze', 'Carter's Sunburst'	Dale & Mary Kay Mittag
Court of Honor	'Hishi-Karaito', 'Waltz Time', Frank Houser'	D. T. Gray Family
Best Fragrant	'High Fragrance'	'Marvin & Virginia Belcher
Best Seedling		Rudy Blanco
Novice		
Best Large/Very Large	'Silver Waves'	Kathy Holmes
Runner-up	'Elegans Chandler'	Kathy Holmes
Best Small/Medium	'Pink Perfection'	Robin Sease

Runner-up Small/Medium	'Man Size'	Kathy Holmes
Intermediate		
Best Large/Very Large	'Virginia Robinson'	Bill Taylor
Runner-up	'Elegans Splendor'	Paul & Nancy Speaker
Best Small/Medium	'Nuccio's Gem'	Anita Davis
Runner-up Small/Medium	'Herme'	Barbara Berton
Best Tray of 3 Novice/Intermediate		
	'Nuccio's Pearl'	Paul & Nancy Speaker
George Lewis Trophy		
Best Untreated Bloom	'Frank Houser Variegated'	Sergio & Elsie Bracci
Best Special Culture Bloom	'Miss Charleston Variegated'	D. T. Gray Family
Award of Merit		Sergio & Elsie Bracci



HAVE YOU EVER WONDERED—

Why can some people “get your goat” instead of “getting your mynah bird” or “getting your Basset Hound?”

Although there is some dispute about how this colorful term for the uncanny ability of some people to rile us, annoy us, irritate us, vex us, and get under our skin, most lexicographers attribute the origins of get your goat to the world of thoroughbred horse racing. Horse trainers have long put a companion in stalls with high-strung thoroughbreds, particularly volatile stallions.

Putting a horse of the same sex in the stall would lead to territorial battles; putting a horse of the opposite

sex in the stall might, to put it politely, distract the stallion from the task at hand. Goats, among the most boring and least demanding of animals, soothed horses effectively.

Horses tended to become attached to their goat roommates, so much so that rival barns sometimes would steal the goat of a rival the night before a race. The horse would become upset and presumably underperform the next day. So someone whose goat has been gotten is actually being compared to a horse rather than a goat.

Quoted from *Who Put the Butter in Butterfly?* by David Feldman, Harper & Row, 1989.

DIRECTORY OF CALIFORNIA CAMELLIA SOCIETIES

CENTRAL CALIFORNIA CAMELLIA SOCIETY: President—Jeane Shoemaker; Secretary—Joan Hill, 37341 Ave 17 1/2, Madera, 93638. Meetings: 3rd Wednesday, November-February, 7:30 p.m. Sheraton Smuggler's Inn, 3737 N. Blackstone, Fresno.

KERN COUNTY, CAMELLIA SOCIETY OF: President—Helen Maas; Secretary—Jane Brady, 7401-21 Hilton Head Way, Bakersfield 93309. For meeting dates and times, call Helen Maas (805)872-2188.

MODESTO, CAMELLIA SOCIETY OF: President—Don Kendall; Secretary—Sue Kendall, 1505 Gary Lane. Modesto, 95355. Meetings: 1st Sunday, October-April, 1:00 p.m., 220-A Standiford Avenue, Modesto.

NORTHERN CALIFORNIA CAMELLIA SOCIETY: President—Don Bergamini; Secretary—Eric Hansen. Meetings: 1st Monday, November-April, 7:30 p.m., Oak Grove School, 2050 Minert Road, Concord. Final meeting in May is a dinner meeting.

ORANGE COUNTY CAMELLIA SOCIETY: President—Linda Rodriguez; Secretary—Peggy Sheldon, 20151 Crown Reef Lane, Huntington Beach 92646. Meetings: 1st Monday, October-April, 7:00 p.m. Dept. of Education Building, 200 Kalmus, Costa Mesa

PACIFIC CAMELLIA SOCIETY: President—Elsie Bracci. Meetings: 1st Thursday, November-April, 7:30 p.m., Descanso Gardens, 1418 Descanso Drive, La Canada.

PENINSULA CAMELLIA SOCIETY: President—Barbara Coates Tuffli; Secretary—Nicky Farmer, 360 Santa Margarita Avenue, Menlo Park 94025. Meetings: 4th Monday, October-March, Veterans' Building Annex, 711 Nevada St., Rm. 20 (elevator available), Redwood City

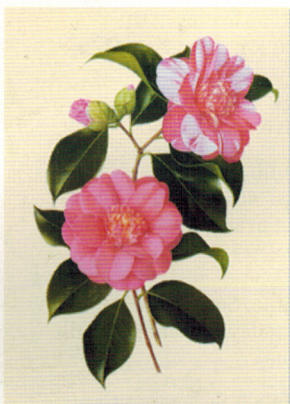
POMONA VALLEY CAMELLIA SOCIETY: President—David Trujillo; Secretary—Dorothy Christinson, 3751 Hoover St., Riverside 95204. Meetings: 2nd Tuesday, November-April, 7:30 p.m., Lutheran Church, Corner Baseline and Wheeler, La Verne.

SACRAMENTO, CAMELLIA SOCIETY OF: President—Jackie Randall; Secretary—Gary Schanz, 1177 Cavanaugh Way, Sacramento 95822. Meetings: 4th Tuesday, October-April, 7:30 p.m., Studio Theater, 1028 "R" Street, Sacramento

SAN DIEGO CAMELLIA SOCIETY: President—Dean Turney; Secretary—Lew Gary, 11419 Cabela Place, San Diego 92127. Meetings: 3rd Wednesday, November-April, 7:30 p.m., Room 101 Casa del Prado, Balboa Park, San Diego.

SANTA CLARA COUNTY, INC., CAMELLIA SOCIETY OF: President—Walt Dabel. Meetings: 3rd Wednesday, October-April, 7:30 p.m., Lick Mill Park, 4750 Lick Mill Boulevard, Santa Clara.

SOUTHERN CALIFORNIA CAMELLIA SOCIETY: President—Brad King; Secretary—Sandra Ragusa, 10720 E. Freer St., Temple City, CA 91780. Meetings: 7:30 p.m., Ayres Hall, Los Angeles County Arboretum, 301 Baldwin Avenue, Arcadia. Call Marilee Gray for meeting dates (909) 624-4107.



Your friends will enjoy receiving your greetings on these new camellia note cards. They also make great gifts for your fellow camellia lovers or for those you are trying to get involved in this wonderful hobby! Cards and matching envelopes are packaged in sets of 8.

Order Today!

